

TP-CA 216

Adaptation Kit, Box of Blades
TP-CA 2000 For platform Claas S750

INSTALLATION MANUAL



TEL: 02273 442214

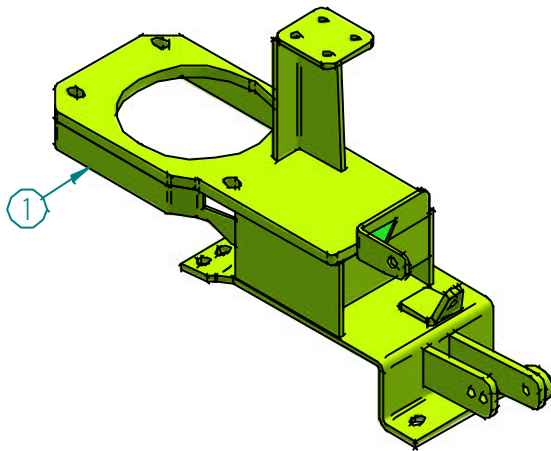
CONTACTO@TECPEREZ.COM.AR

WWW.TECNOLOGIAPEREZ.COM.AR

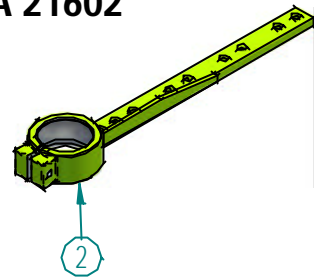


TP-CA 216

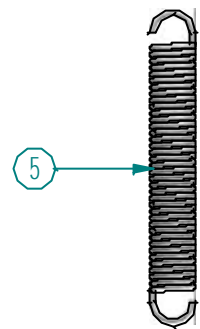
TP-CA 21601



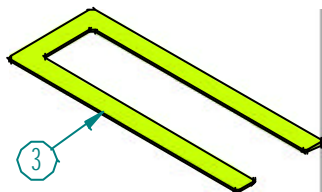
TP-CA 21602



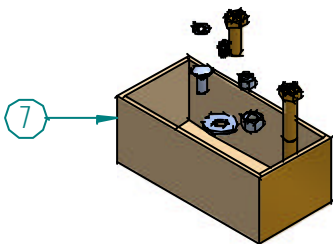
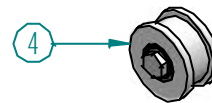
120100



TP-CA 21403



10-25118



TP-CA 216

PARTS:

N°	CODE	DESCRIPTION	QUANT.
1	TP-CA 21601	BOX OF BLADES BASIS	1
2	TP-CA 21602	BOX OF BLADES CUTTING EDGE	1
3	TP-CA 21403	CUTTING MASK	1
4	10-25118	GRILLON PULLEY	1
5	120100	SPRING	1
6	C151	PULLEY	1
7		SCREWS KIT	1

SCREWS KIT:

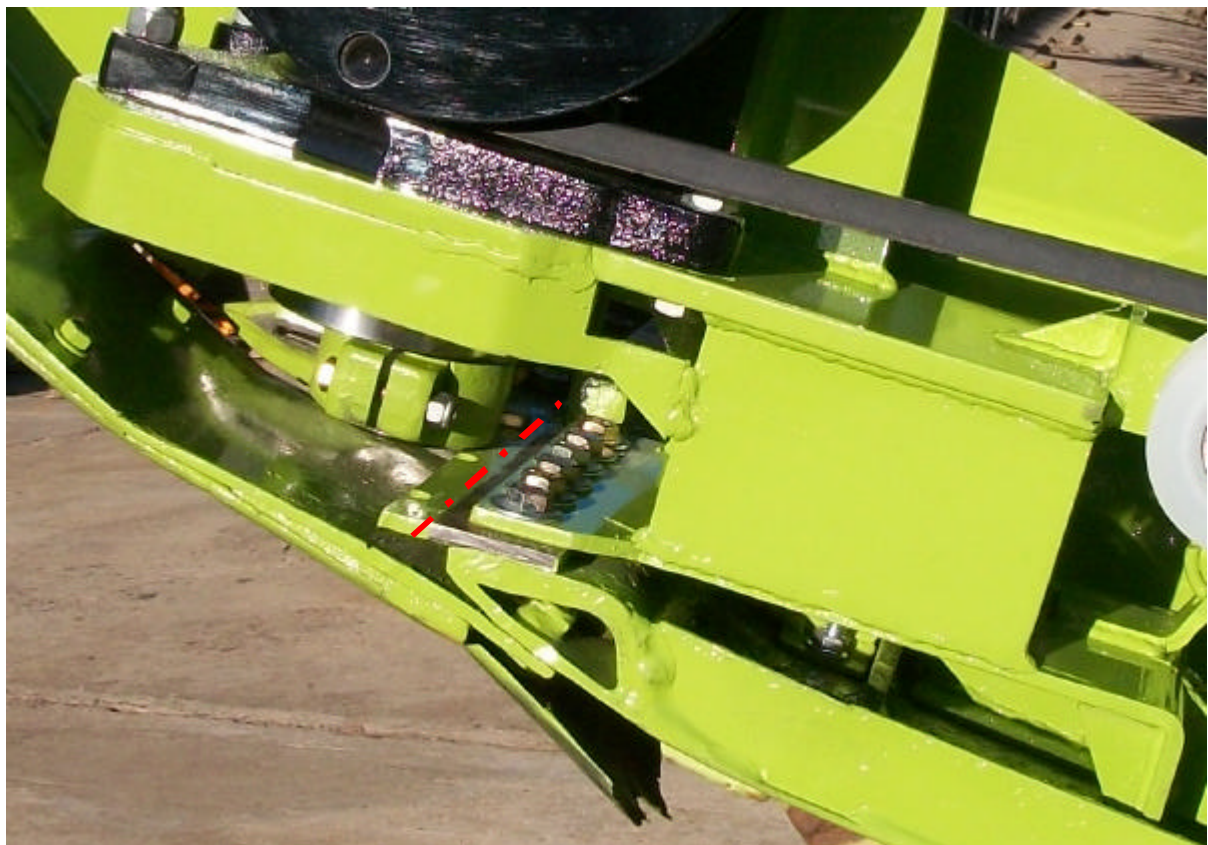
DESCRIPTION	MEASURE	WITH	QUANT.
ROUND HEAD BASIS REAR SCREWS	12 x 25	FLANGE NUT	2
FRONT BASIS HEXAGONAL HEAD SCREWS	10 x 25		6
SHOCK ABSORBER SUPPORT BASIS SCREW	10 x 55	SELF BRAKING NUT	1
UPPER SUPPORT BASIS SCREWS	8 x 20	FLANGE NUT	4
HEAD BLADE SCREW	8 x 50	SELF BRAKING NUT	1
BOX SCREWS	1/2 x 13 x 50	SELF BRAKING NUT	4

In order to install this kit, you will have to follow these instructions:

Take pulley, box of blades, head blade and original basis. Then, detach spring, beam fastener and upper tensor arm.

Take off original finger and verify structure of the beam group, verify possible cracks and breaking in the side sheet.

Before putting the TP-CA 21601 basis, we will have to make a 165 mm cut in the finger bar just at the level where the holes are as shown in the following picture. This is done so that there is no interference with the head blade.



Present the TP-CA 21601 basis, first place screws and then adjust them.

Put spring 120100, stretch and regulate once the machine is started.

Put upper stabilizer arm and regulator of chain slider fastener.



Put the TP-CA 2000 box using the four screws mentioned in the list, you will see that two of them have spawned head, these are the ones that are placed in the front part of the basis.

Place them without adjusting until the correct position is found.

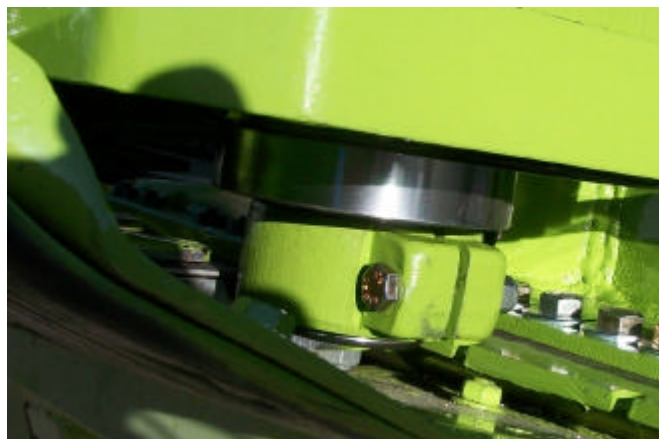
Put head blade TP-CA 21602 over the cutting bar.

Take inferior stump out of the box (taking the two allen screws) and put it in the head blade.

Move cutting bar inward, put stump in its original position and adjust.

Check that the box can be moved forwards and backwards. While spinning the pulley with your hands, check that the movement of the cutting bar is soft and there are no hits or interference.

Adjust box after having spinned the pulley 3 or 4 times.

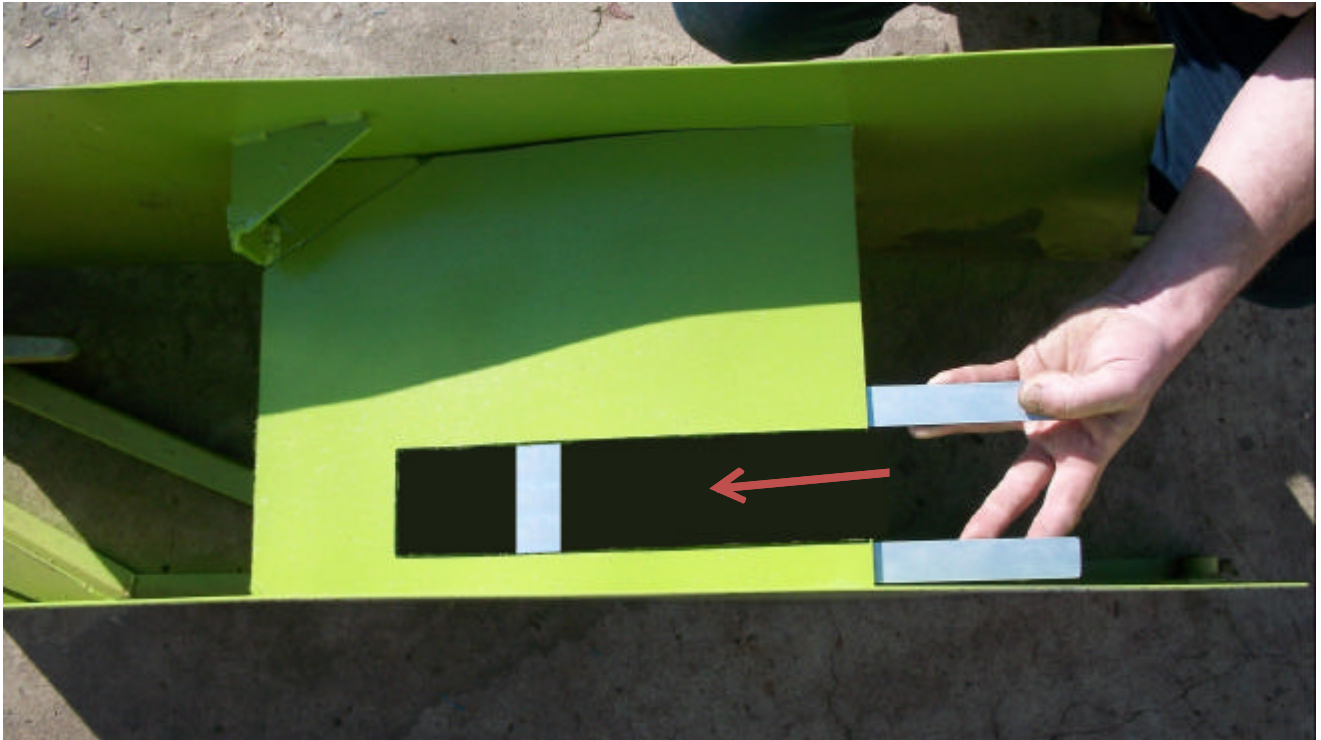


Place pulley, check tension and readjust after the first working hours.

Before putting the original finger, we must make a cut in the upper part so that the upper part of the pulley of the box of blades TP-CA 2000 can get through in a very simple way. In the kit, you will find the part TP-CA 21403 which will be put over the finger as shown in the picture to mark the area to be cut.



Once said cut has been made, we will use the part TP-CA 21403 again in order to put it in the inferior part so that the area to be cut can be reinforced. It is necessary for the U ends to be at the level of the upper sheet and then weld shortly all around the frame in the inferior part.



- Start at low revolutions, check movements.
- Put at working revolutions and check.
- Lubricate inferior stump 2 or 3 times in a day.
- Lubricate alemite fittings once every four days.
- Do not lubricate upper alemite fitting frequently as the box is full of lubrication. Use lubrication recommended by the manufacturer. See instructions manual of the box of blades.