

TP-CA 223

Adaptation kit for box of blades TP-CA 2012 for platforms

Case: 3020-20FT SD – 3020-25FT SD – 3020-30FT SD

NH: 740CF-20FT-SD – 740CF-25FT-SD – 740CF-30FT-SD

INSTALLATION MANUAL



TECNOLOGIA PEREZ

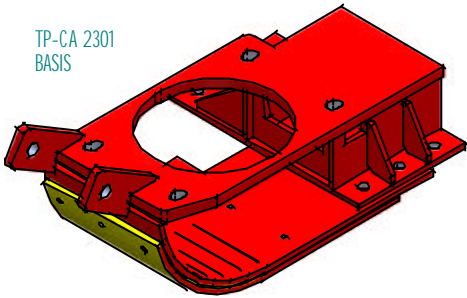


TEL: 02273 442214
CONTACTO@TECPEREZ.COM.AR
WWW.TECNOLOGIAPEREZ.COM.AR

TP-CA 223

ADAPTATION KIT FOR BOX OF BLADES TP-CA 2012 FOR PLATFORMS CASE AND NEW HOLLAND

TP-CA 2301
BASIS



TP-CA 2304
BOTTOM BLADE



TP-CA 2312
SPRING HOOK



C122
BELT



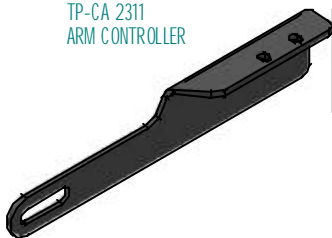
99-44000
SPRING



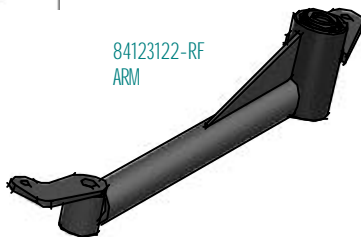
TP-CA 2303
PULLEY 04-12539-TP WITH MACE TP-CA 2305



TP-CA 2311
ARM CONTROLLER



84123122-RF
ARM



71306443
PULLEY



COMPONENTS:

QUANT.	CODE	DESCRIPTION
1	TP-CA 2301	BOX OF BLADES BASIS
1	TP-CA 2304	BOTTOM BLADE
1	TP-CA 2303	PULLEY 04-12539-TP WITH MACE TP-CA 2305
1	TP-CA 2311	ARM CONTROLLER
1	TP-CA 2312	SPRING HOOK
1	84123122-RF	ARM
1	71306443	PULLEY
1	99-44000	SPRING
1	C122	BELT

KIT OF SCREWS:

QUANT.	DESCRIPTION	MEASUREMENT	WITH	LOCATION
3	SCREWS	12 x 35	BEVELLED RING PULLS AND FLANGE NUTS	TP-CA 2301
3	SCREWS	12 x 30	BEVELLED RING PULLS AND FLANGE NUTS	TP-CA 2301
2	SCREWS	10 x 25	BEVELED RING PULLS	TP-CA 2301
4	SCREWS	12 x 1,75 x 55	SELF BRAKING SCREW	TP-CA 2301
1	SCREWS	½" x 4"	2 NUTS	
13	SCREW	665-013		

For the installation of the adaptation kit for box of blades,
the first step is to take out the original pieces of the
platform

Take the following pieces out of the platform:

Finger

Belt

Command Pulley

Box of Blades

Bottom Blade

Head Blade

Leave the edge of the cutting bar free and taken outwards.



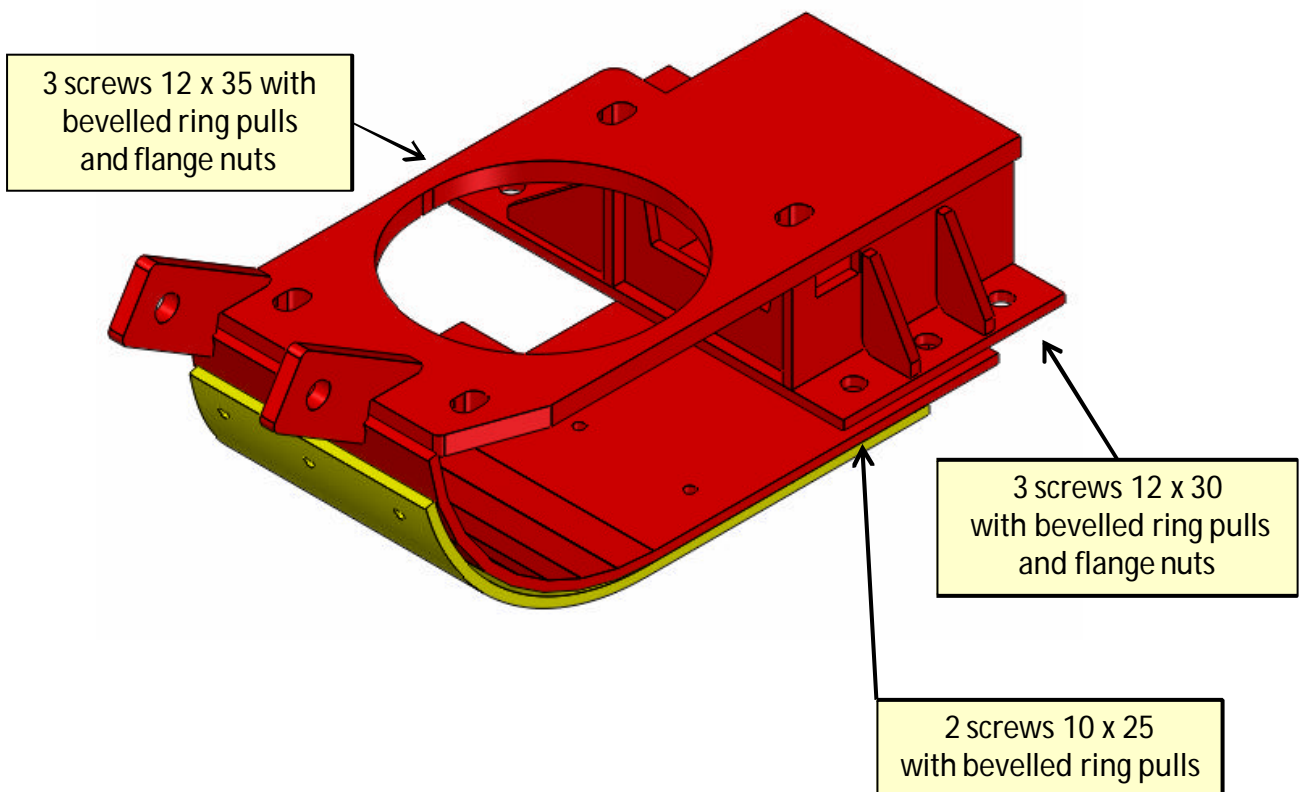
Place pieces provided in the kit

Before mounting **TP-CA 2301** basis, check beam and check that there are no cracks or pieces in bad conditions because of wear.

Once this has been checked, put the basis with the screws provided in the kit and observe their location as shown in this figure.

Adjust screws evenly.

TP-CA 2301



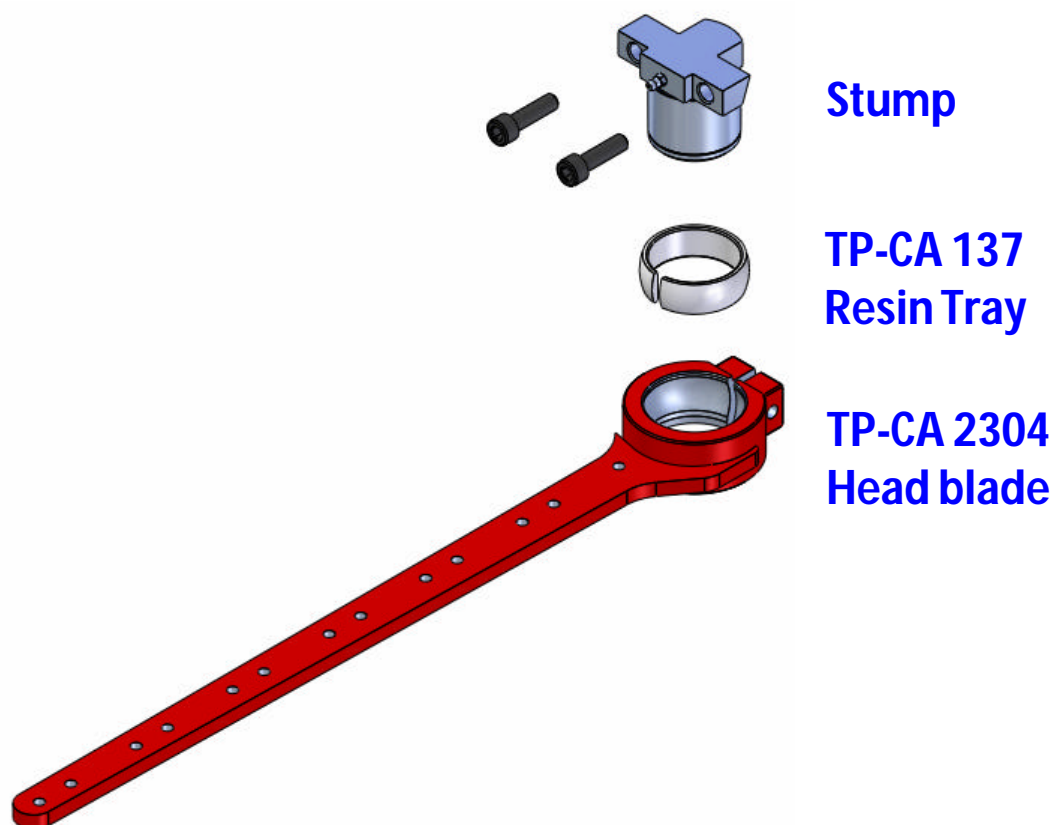
Put **TP-CA 2304** bottom blade on the cutting bar.

Take the inferior stump out of the box of blades **TP-CA 2012** (using an 8 mm allen wrench) and put it on the bottom blade **TP-CA 2304** without adjusting.

Put box of blades **TP-CA 2012** placing the four screws to be adjusted but without adjusting.

Move cutting bar and turn pulley of the box of blades so that the stump is placed in its original working position.

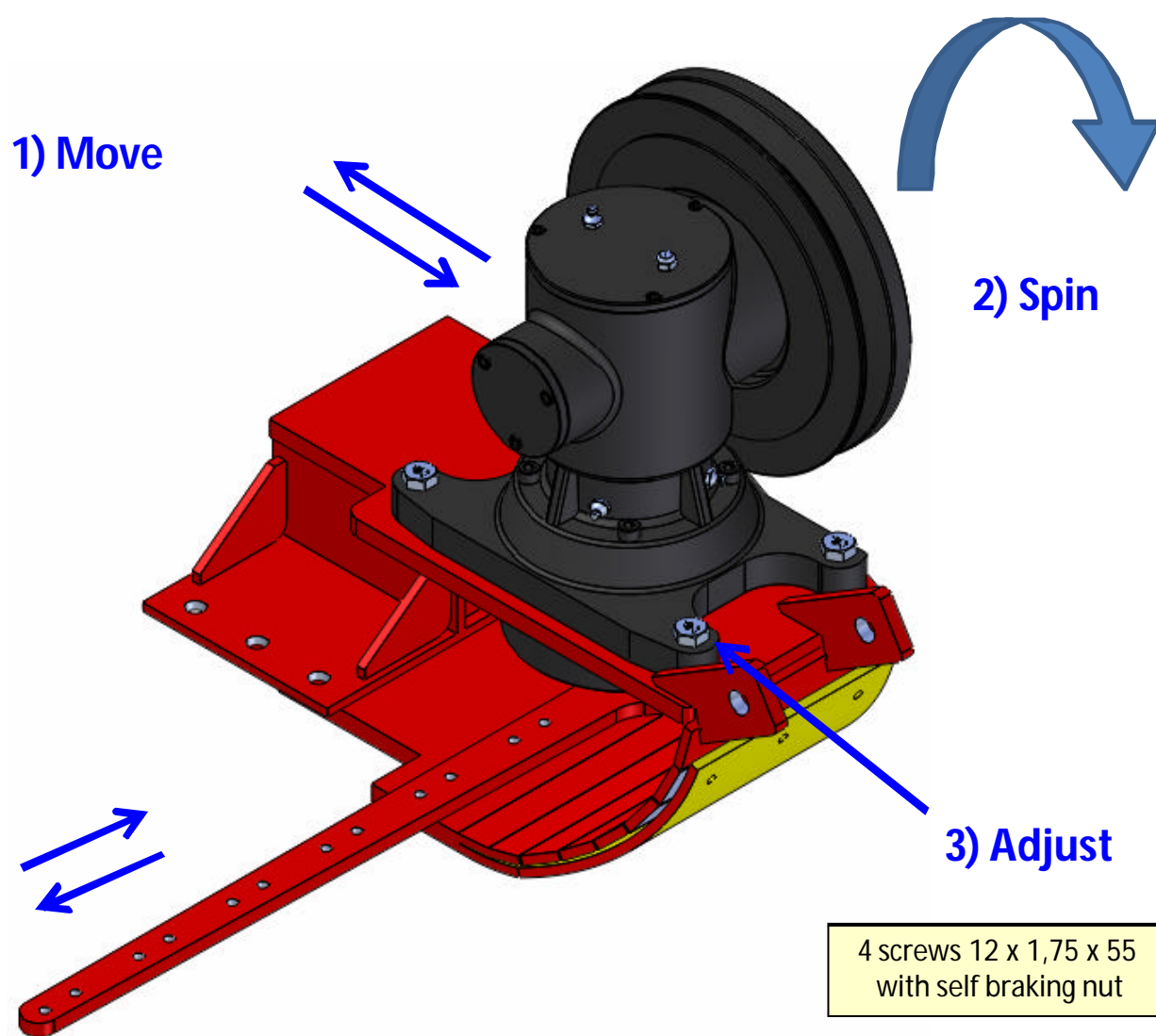
Adjust allen screws of the inferior stump.



TP-CA 2301 basis has drivers to move the **TP-CA 2012** box of blades forwards and backwards so that it reaches its correct working position.

Turn pulley and check that the cutting bar moves freely and smoothly, spin 3 or 4 times so that it reaches its correct working position and adjust the four screws of the box.

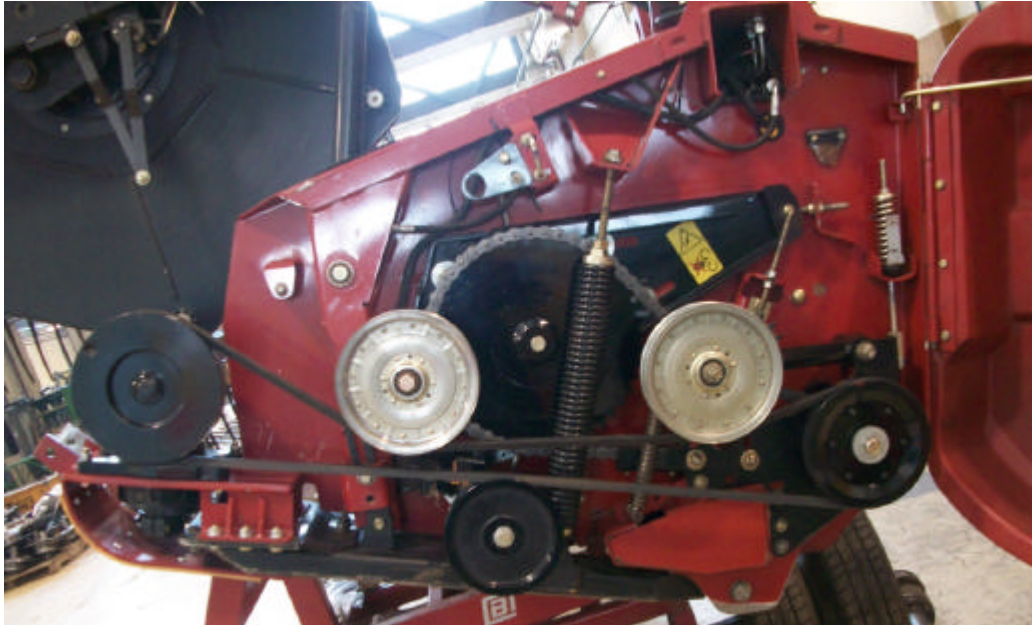
Adjust the screw of the head blade **TP-CA 2304**.



Replace the following pieces

Replace command pulley with **TP-CA 2305**.

Replace inferior pulley with **71306443**.



Replace the arm for stretching the pulley with arm **84123122-RF** provided in the kit. This arm works mounted over ball bearings, free from movement.



Line up pulley.

Put the stabilizing spring as shown in the figure.



Put belt **C122**, regulate tension with the original record, check lining up, regulate with original ring pulls and additional parts.

Disassemble the supporting arm of the finger and replace it with **TP-CA 2311** provided in the kit that will work in the original position with the same system.



TP-CA 2311



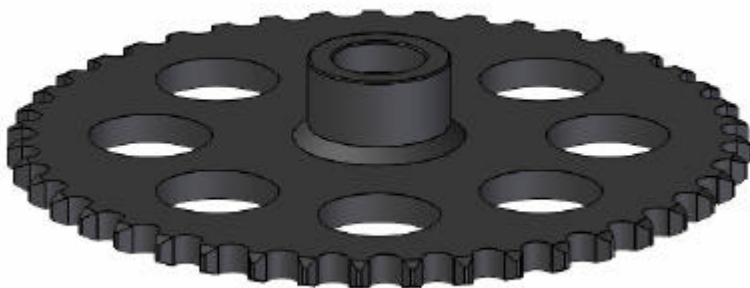
NOT INCLUDED IN THE KIT

Tecnología Pérez has the **TP-CA 2320** kit to reduce RPM. Therefore, it is possible to avoid the breaking of plastic benches and spikes.

This kit includes the worm command gear assembly (interlinked) Z46 x 1" N° **84176718-TP** and the support for floating sensors **84296810-TP**, which is thicker than the original piece in order to prevent sprain and cracks as well as self-lubricated bronze bushings mounting for the command axis of sensors.

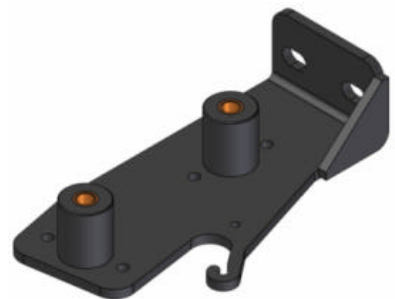
TP-CA 2320 NOT INCLUDED

84176718-TP



CHAIN LENGTH
1910 JOINT 1"
HANDLE 80
SIMPLE

84296810-TP



FINAL ADJUSTMENTS

Start at low revolutions, observe movement, movement of the cutting bar and belt tension and increase revolutions up to their maximum.

The box **TP-CA 2012** has been lubricated at the workshop, we recommend not to add lubrication during its first working hours. Only lubricate inferior stump at the end of working day (2 or 3 pumps).

In the central part and the upper part of the box **TP-CA 2012** there are grease nipples from which we can choose the one that is in a convenient position at the time of lubrication. Lubrication in excess causes high working temperatures. Normal temperature is 70° C (158° F).

We recommend multiplex EP2 (elf) lubrication grease.

See stamps with lubrication times.



TEL: 02273 442214
contacto@tecperez.com.ar